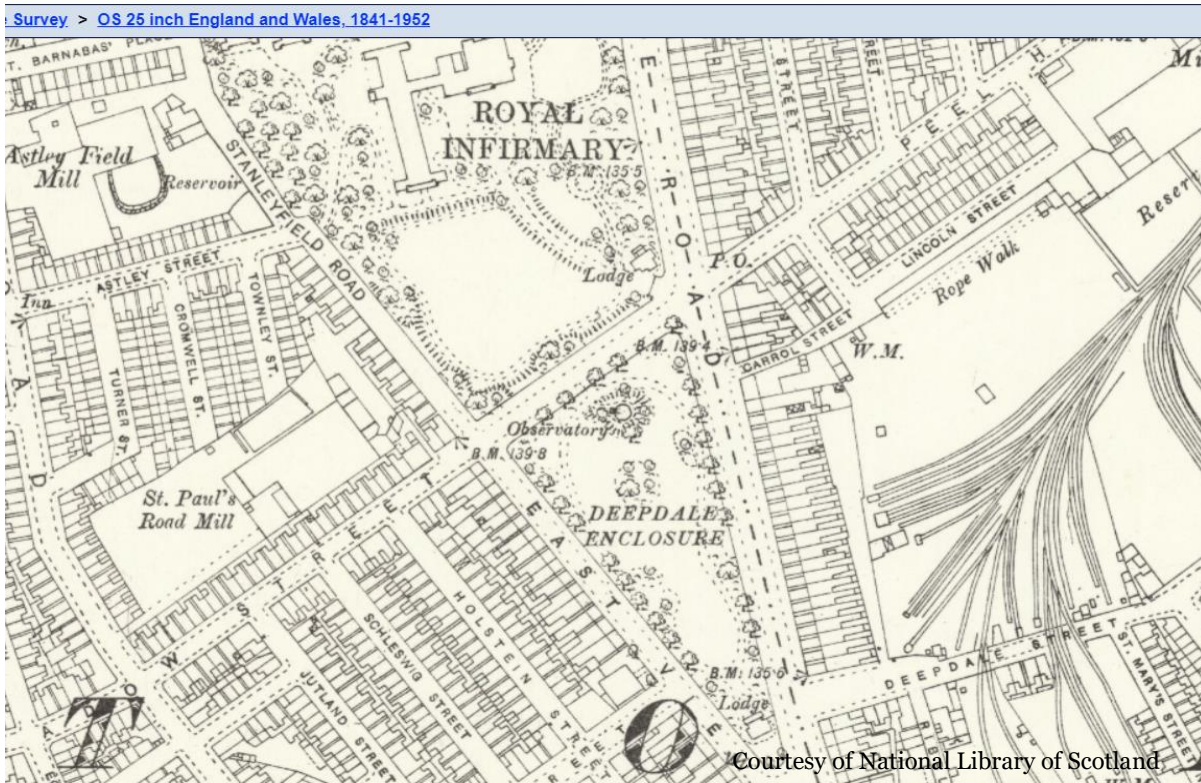


# Preston Municipal Observatory – Deepdale, Preston

Lancashire LXI.10

Surveyed: 1891 to 1892, Published: 1893

Size: map 64.4 cm x 96.6 cm (25.344 x 38.016 inches), on sheet ca. 76 x 104 cm (ca. 30 x 41 inches)



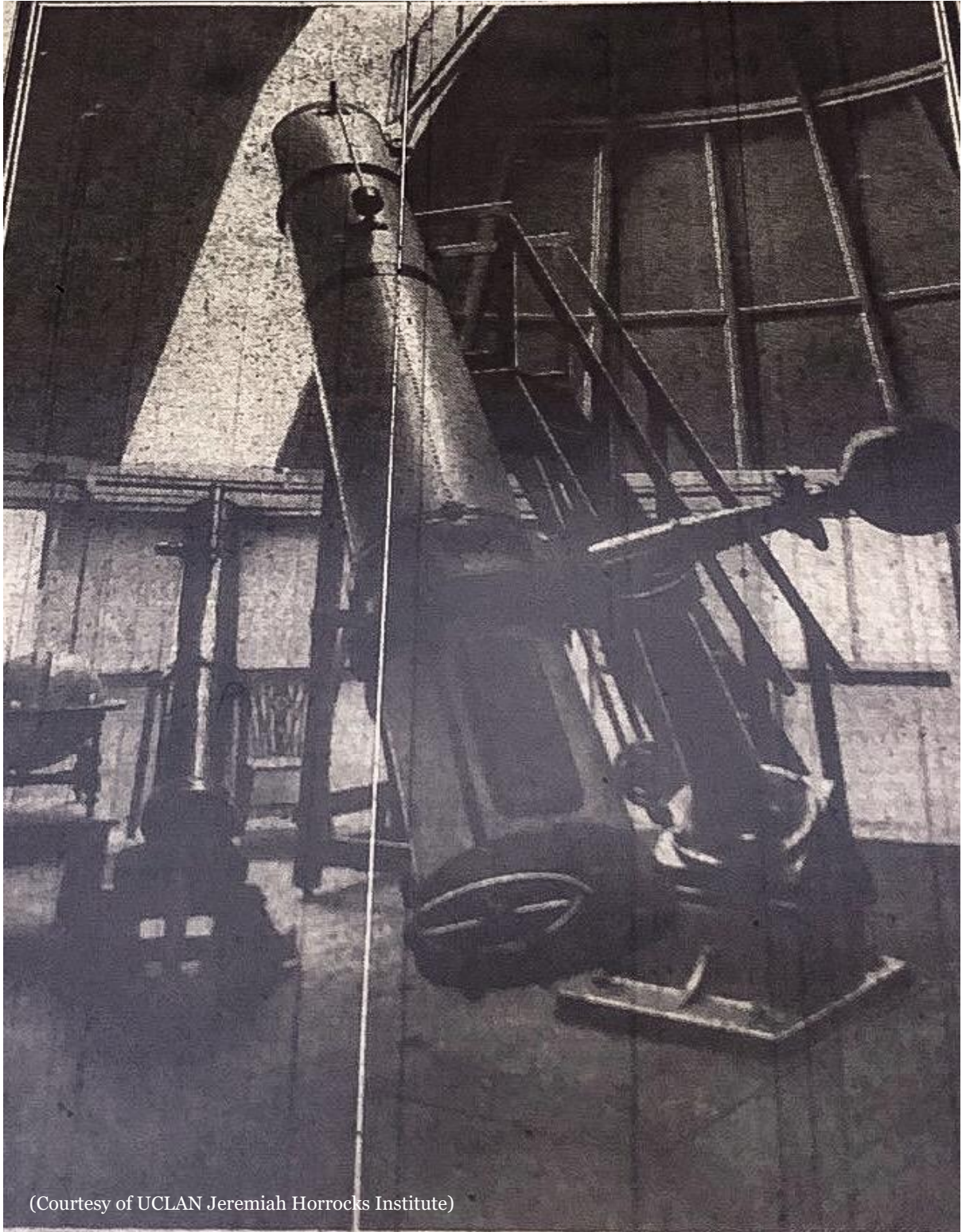
**Preston Municipal Observatory – Deepdale Enclosure**



**Preston Municipal Observatory – exterior view (George Gibbs Archive)**



## Preston Municipal Observatory – Deepdale, Preston



(Courtesy of UCLAN Jeremiah Horrocks Institute)

**Preston Municipal Observatory** – 18-inch reflecting telescope built by James Cook for Alderman Robert Green Watson (George Gibbs Archive)



## Preston Municipal Observatory – Deepdale, Preston



**Preston Municipal Observatory** – The new refracting telescope  
an 8-inch Cooke refractor that replaced the old reflector in 1913  
(George Gibbs Archive)